



AiP74LVC1G3157
2-channel Analog
Multiplexer/Demultiplexer
Product Specification

Specification Revision History:

Version	Date	Description
2020-05-A1	2020-05	New
2023-04-B1	2023-04	Update the template

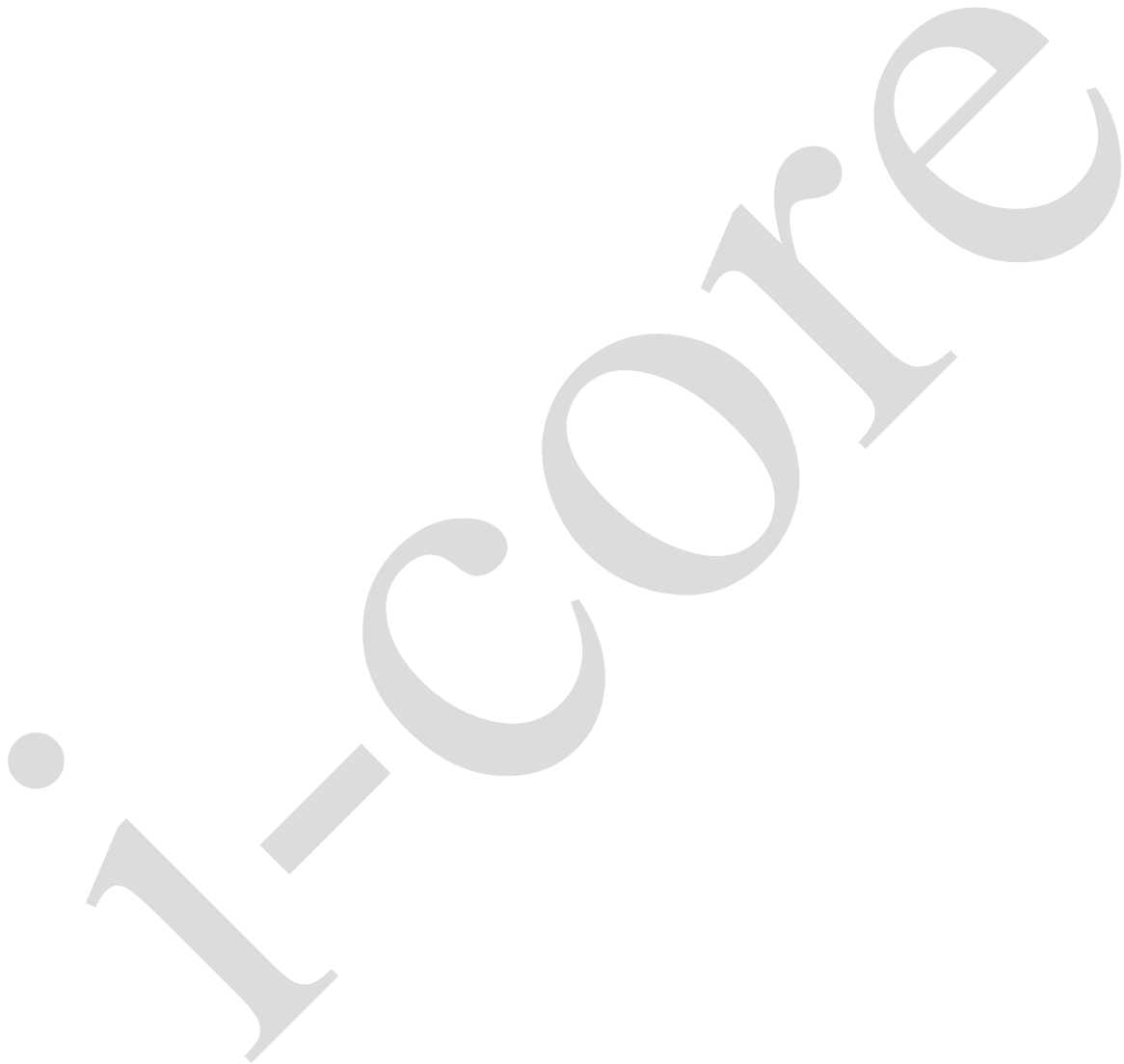


Contents

1、 General Description.....	4
2、 Block Diagram And Pin Description	5
2.1、 Block Diagram	5
2.2、 Pin Configurations.....	5
2.3、 Pin Description	6
2.4、 Function Table.....	6
3、 Electrical Parameter	6
3.1、 Absolute Maximum Ratings.....	6
3.2、 Recommended Operating Conditions	7
3.3、 Electrical Characteristics	7
3.3.1、 DC Characteristics 1	7
3.3.2、 DC Characteristics 2	8
3.3.3、 ON Resistance 1	9
3.3.4、 ON Resistance 2	10
3.3.5、 AC Characteristics 1	11
3.3.6、 AC Characteristics 2	12
3.3.7、 Additional AC Characteristics	13
4、 Testing Circuit	13
4.1、 DC Testing Circuit	13
4.2、 ON Resistance Test Circuit And Graphs.....	14
4.3、 AC Testing Waveforms.....	16
4.4、 Measurement Points	17
4.5、 AC Testing Circuit	17
4.6、 Test Data	18
4.7、 Additional AC Testing Circuit	19
5、 Package Information	21
5.1、 SOT-23-6.....	21
5.2、 SOT-363	22
5.3、 XSON6.....	23
6、 Statements And Notes	24
6.1、 The name and content of Hazardous substances or Elements in the product.....	24



6.2、Notes 24





1、 General Description

The AiP74LVC1G3157 provides one analog multiplexer/demultiplexer with one digital select input (S), two independent inputs/outputs (Y0, Y1) and a common input/output (Z).

Schmitt trigger action at the select input makes the circuit tolerant of slower input rise and fall times across the entire V_{CC} range from 1.65V to 5.5V.

Features:

- Wide supply voltage range from 1.65V to 5.5V
- Very low ON resistance:
 - 7.5 Ω (typical) at $V_{CC}=2.7V$
 - 6.5 Ω (typical) at $V_{CC}=3.3V$
 - 6 Ω (typical) at $V_{CC}=5V$
- Switch current capability of 32mA
- Break-before-make switching
- CMOS low power consumption
- TTL interface compatibility at 3.3V
- Control input accepts voltages up to 5.5V
- Specified from -40 $^{\circ}C$ to +125 $^{\circ}C$
- Packaging information: SOT-23-6/SOT-363/XSON6

Ordering Information:

Reel packing specifications:

Part number	Packaging form	Marking code	Reel quantity	Boxed reel quantity	Notes
AiP74LVC1G3157GB236.TR	SOT-23-6	CNXX	3000 PCS/reel	30000 PCS/box	Dimensions of plastic enclosure: 2.9mm \times 1.6mm Pin spacing: 0.95mm
AiP74LVC1G3157GC363.TR	SOT-363	CNXX	3000 PCS/reel	30000 PCS/box	Dimensions of plastic enclosure: 2.1mm \times 1.3mm Pin spacing: 0.65mm
AiP74LVC1G3157EA6.TR	XSON6	CNXX	5000 PCS/reel	25000 PCS/box	Dimensions of plastic enclosure: 1.45mm \times 1.0mm Pin spacing: 0.5mm

Note 1: "XX" refers to variable content, meaning year and package batch serial number.

Note 2: If the physical information is inconsistent with the ordering information, please refer to the actual product.



2、Block Diagram And Pin Description

2.1、Block Diagram

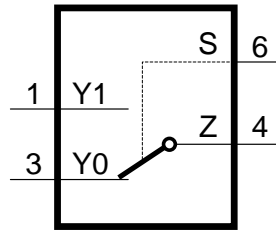


Figure 1. Logic symbol

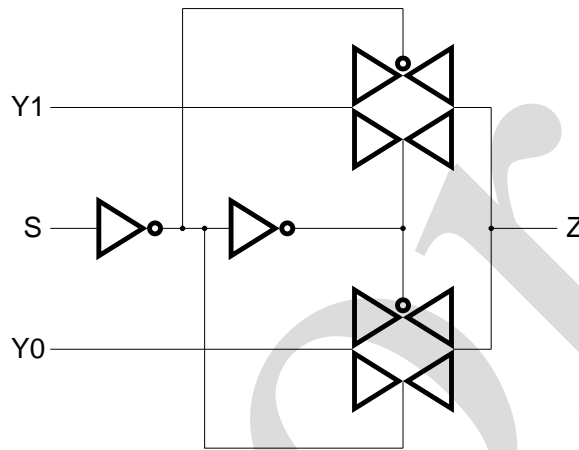
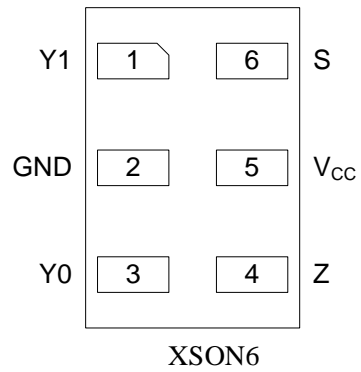
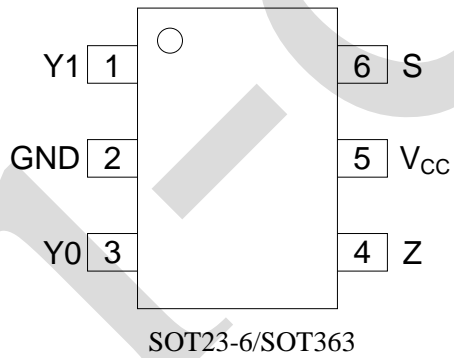


Figure 2. Logic diagram

2.2、Pin Configurations





2.3、Pin Description

Pin No.	Pin Name	Description
1	Y1	independent input or output
2	GND	ground (0 V)
3	Y0	independent input or output
4	Z	common output or input
5	V _{CC}	supply voltage
6	S	select input

2.4、Function Table

Input S	Channel on
L	Y0
H	Y1

Note: H=HIGH voltage level; L=LOW voltage level.

3、Electrical Parameter

3.1、Absolute Maximum Ratings

(T_{amb}=25°C, All voltage referenced to GND, unless otherwise specified)

Characteristic	Symbol	Conditions	Min.	Max.	Unit
supply voltage	V _{CC}	-	-0.5	+6.5	V
input voltage	V _I	- ^[1]	-0.5	+6.5	V
input clamping current	I _{IK}	V _I <-0.5V or V _I >V _{CC} +0.5V	-50	-	mA
switch clamping current	I _{SK}	V _I <-0.5V or V _I >V _{CC} +0.5V	-	±50	mA
switch voltage	V _{SW}	enable and disable mode ^[2]	-0.5	V _{CC} +0.5	V
switch current	I _{SW}	V _{SW} >-0.5V or V _{SW} <V _{CC} +0.5V	-	±50	mA
supply current	I _{CC}	-	-	100	mA
ground current	I _{GND}	-	-100	-	mA
storage temperature	T _{stg}	-	-65	+150	°C
total power dissipation	P _{tot}	-	-	250	mW
soldering temperature	T _L	10s	260		°C

Note:

[1] The minimum input voltage rating may be exceeded if the input current rating is observed.

[2] The minimum and maximum switch voltage ratings may be exceeded if the switch clamping current rating is observed.



3.2、Recommended Operating Conditions

Characteristic	Symbol	Conditions	Min.	Typ.	Max.	Unit
supply voltage	V_{CC}	-	1.65	-	5.5	V
input voltage	V_I	-	0	-	5.5	V
switch voltage	V_{SW}	enable and disable mode ^[1]	0	-	V_{CC}	V
ambient temperature	T_{amb}	-	-40	-	+125	°C
input transition rise and fall rate	$\Delta t/\Delta V$	$V_{CC}=1.65V$ to $2.7V$ ^[2]	-	-	20	ns/V
		$V_{CC}=2.7V$ to $5.5V$ ^[2]	-	-	10	ns/V

Note:

[1] To avoid sinking GND current from terminal Z when switch current flows in terminal Y_n , the voltage drop across the bidirectional switch must not exceed 0.4V. If the switch current flows into terminal Z, no GND current will flow from terminal Y_n . In this case, there is no limit for the voltage drop across the switch.

[2] Applies to control signal levels.

3.3、Electrical Characteristics

3.3.1、DC Characteristics 1

($T_{amb}=-40^{\circ}C$ to $+85^{\circ}C$, voltages are referenced to GND (ground=0V), unless otherwise specified)

Parameter	Symbol	Conditions	Min.	Typ. ^[1]	Max.	Unit
HIGH-level input voltage	V_{IH}	$V_{CC}=1.65V$ to $1.95V$	$0.65V_{CC}$	-	-	V
		$V_{CC}=2.3V$ to $2.7V$	1.7	-	-	V
		$V_{CC}=3V$ to $3.6V$	2.0	-	-	V
		$V_{CC}=4.5V$ to $5.5V$	$0.7V_{CC}$	-	-	V
LOW-level input voltage	V_{IL}	$V_{CC}=1.65V$ to $1.95V$	-	-	$0.35V_{CC}$	V
		$V_{CC}=2.3V$ to $2.7V$	-	-	0.7	V
		$V_{CC}=3V$ to $3.6V$	-	-	0.8	V
		$V_{CC}=4.5V$ to $5.5V$	-	-	$0.3V_{CC}$	V
input leakage current	I_I	pin S; $V_I = 5.5V$ or GND; $V_{CC} = 0V$ to $5.5V$ ^[2]	-	± 0.1	± 1	μA
OFF-state	$I_{S(OFF)}$	$V_{CC}=5.5V$; see Figure 3 ^[2]	-	± 0.1	± 0.2	μA
ON-state	$I_{S(ON)}$	$V_{CC}=5.5V$; see Figure 4 ^[2]	-	± 0.1	± 1	μA
supply current	I_{CC}	$V_I=5.5V$ or GND; $V_{SW}=GND$ or V_{CC} ; $V_{CC}=1.65V$ to $5.5V$ ^[2]	-	0.1	4	μA
additional supply current	ΔI_{CC}	pin S; $V_I=V_{CC}-0.6V$; $V_{CC}=5.5V$; $V_{SW}=GND$ or V_{CC} ^[2]	-	5	500	μA
input capacitance	C_I	-	-	2.5	-	pF
OFF-state capacitance	$C_{S(OFF)}$	-	-	6.0	-	pF
ON-state capacitance	$C_{S(ON)}$	-	-	18	-	pF

Note:

[1] Typical values are measured at $T_{amb}=25^{\circ}C$.



[2] These typical values are measured at $V_{CC}=3.3V$

3.3.2、DC Characteristics 2

($T_{amb}=-40^{\circ}C$ to $+125^{\circ}C$, voltages are referenced to GND (ground=0V), unless otherwise specified)

Parameter	Symbol	Conditions	Min.	Typ.	Max.	Unit
HIGH-level input voltage	V_{IH}	$V_{CC}=1.65V$ to $1.95V$	$0.65V_{CC}$	-	-	V
		$V_{CC}=2.3V$ to $2.7V$	1.7	-	-	V
		$V_{CC}=3V$ to $3.6V$	2.0	-	-	V
		$V_{CC}=4.5V$ to $5.5V$	$0.7V_{CC}$	-	-	V
LOW-level input voltage	V_{IL}	$V_{CC}=1.65V$ to $1.95V$	-	-	$0.35V_{CC}$	V
		$V_{CC}=2.3V$ to $2.7V$	-	-	0.7	V
		$V_{CC}=3V$ to $3.6V$	-	-	0.8	V
		$V_{CC}=4.5V$ to $5.5V$	-	-	$0.3V_{CC}$	V
input leakage current	I_I	pin S; $V_I = 5.5V$ or GND; $V_{CC} = 0V$ to $5.5V$ ^[1]	-	-	± 1	μA
OFF-state	$I_{S(OFF)}$	$V_{CC}=5.5V$; see Figure 3 ^[1]	-	-	± 0.5	μA
ON-state	$I_{S(ON)}$	$V_{CC}=5.5V$; see Figure 4 ^[1]	-	-	± 2	μA
supply current	I_{CC}	$V_I=5.5V$ or GND; $V_{SW}=GND$ or V_{CC} ; $V_{CC}=1.65V$ to $5.5V$ ^[1]	-	-	4	μA
additional supply current	ΔI_{CC}	pin S; $V_I=V_{CC}-0.6V$; $V_{CC}=5.5V$; $V_{SW}=GND$ or V_{CC} ^[1]	-	-	500	μA



3.3.3、ON Resistance 1

($T_{amb}=-40^{\circ}\text{C}$ to $+85^{\circ}\text{C}$, voltages are referenced to GND (ground=0V), unless otherwise specified)

Parameter	Symbol	Conditions	Min.	Typ. ^[1]	Max.	Unit	
ON resistance (peak)	$R_{ON(peak)}$	$V_I=GND$ to V_{CC} ; see Figure 5	$I_{sw} = 4\text{ mA}; V_{CC}=1.65\text{V to }1.95\text{V}$	-	34.0	130	Ω
			$I_{sw}=8\text{mA}; V_{CC}=2.3\text{V to }2.7\text{V}$	-	12.0	30	Ω
			$I_{sw}=12\text{mA}; V_{CC}=2.7\text{V}$	-	10.4	25	Ω
			$I_{sw}=24\text{mA}; V_{CC}=3\text{V to }3.6\text{V}$	-	7.8	20	Ω
			$I_{sw}=32\text{mA}; V_{CC}=4.5\text{V to }5.5\text{V}$	-	6.2	15	Ω
ON resistance (rail)	$R_{ON(rail)}$	$V_I=GND$; see Figure 5	$I_{sw} = 4\text{ mA}; V_{CC}=1.65\text{V to }1.95\text{V}$	-	8.2	18	Ω
			$I_{sw}=8\text{mA}; V_{CC}=2.3\text{V to }2.7\text{V}$	-	7.1	16	Ω
			$I_{sw}=12\text{mA}; V_{CC}=2.7\text{V}$	-	6.9	14	Ω
			$I_{sw}=24\text{mA}; V_{CC}=3\text{V to }3.6\text{V}$	-	6.5	12	Ω
			$I_{sw}=32\text{mA}; V_{CC}=4.5\text{V to }5.5\text{V}$	-	5.8	10	Ω
		$V_I=V_{CC}$; see Figure 5	$I_{sw} = 4\text{ mA}; V_{CC}=1.65\text{V to }1.95\text{V}$	-	10.4	30	Ω
			$I_{sw}=8\text{mA}; V_{CC}=2.3\text{V to }2.7\text{V}$	-	7.6	20	Ω
			$I_{sw}=12\text{mA}; V_{CC}=2.7\text{V}$	-	7.0	18	Ω
			$I_{sw}=24\text{mA}; V_{CC}=3\text{V to }3.6\text{V}$	-	6.1	15	Ω
			$I_{sw}=32\text{mA}; V_{CC}=4.5\text{V to }5.5\text{V}$	-	4.9	10	Ω
ON resistance (flatness)	$R_{ON(flat)}$	$V_I=GND$ to V_{CC} ^[2]	$I_{sw} = 4\text{ mA}; V_{CC}=1.65\text{V to }1.95\text{V}$	-	26.0	-	Ω
			$I_{sw}=8\text{mA}; V_{CC}=2.3\text{V to }2.7\text{V}$	-	5.0	-	Ω
			$I_{sw}=12\text{mA}; V_{CC}=2.7\text{V}$	-	3.5	-	Ω
			$I_{sw}=24\text{mA}; V_{CC}=3\text{V to }3.6\text{V}$	-	2.0	-	Ω
			$I_{sw}=32\text{mA}; V_{CC}=4.5\text{V to }5.5\text{V}$	-	1.5	-	Ω

Note:

[1] Typical values are measured at $T_{amb}=25^{\circ}\text{C}$ and nominal V_{CC} .

[2] Flatness is defined as the difference between the maximum and minimum value of ON resistance



measured at identical V_{CC} and temperature.

3.3.4、ON Resistance 2

($T_{amb}=-40^{\circ}\text{C}$ to $+125^{\circ}\text{C}$, voltages are referenced to GND (ground=0V), unless otherwise specified)

Parameter	Symbol	Conditions	Min.	Typ.	Max.	Unit	
ON resistance (peak)	$R_{ON(peak)}$	$V_I=GND$ to V_{CC} ; see Figure 5	$I_{sw} = 4\text{ mA}; V_{CC}=1.65\text{V to }1.95\text{V}$	-	-	195	Ω
			$I_{sw}=8\text{mA}; V_{CC}=2.3\text{V to }2.7\text{V}$	-	-	45	Ω
			$I_{sw}=12\text{mA}; V_{CC}=2.7\text{V}$	-	-	38	Ω
			$I_{sw}=24\text{mA}; V_{CC}=3\text{V to }3.6\text{V}$	-	-	30	Ω
			$I_{sw}=32\text{mA}; V_{CC}=4.5\text{V to }5.5\text{V}$	-	-	23	Ω
ON resistance (rail)	$R_{ON(rail)}$	$V_I=GND$; see Figure 5	$I_{sw} = 4\text{ mA}; V_{CC}=1.65\text{V to }1.95\text{V}$	-	-	27	Ω
			$I_{sw}=8\text{mA}; V_{CC}=2.3\text{V to }2.7\text{V}$	-	-	24	Ω
			$I_{sw}=12\text{mA}; V_{CC}=2.7\text{V}$	-	-	21	Ω
			$I_{sw}=24\text{mA}; V_{CC}=3\text{V to }3.6\text{V}$	-	-	18	Ω
			$I_{sw}=32\text{mA}; V_{CC}=4.5\text{V to }5.5\text{V}$	-	-	15	Ω
		$V_I=V_{CC}$; see Figure 5	$I_{sw} = 4\text{ mA}; V_{CC}=1.65\text{V to }1.95\text{V}$	-	-	45	Ω
			$I_{sw}=8\text{mA}; V_{CC}=2.3\text{V to }2.7\text{V}$	-	-	30	Ω
			$I_{sw}=12\text{mA}; V_{CC}=2.7\text{V}$	-	-	27	Ω
			$I_{sw}=24\text{mA}; V_{CC}=3\text{V to }3.6\text{V}$	-	-	23	Ω
			$I_{sw}=32\text{mA}; V_{CC}=4.5\text{V to }5.5\text{V}$	-	-	15	Ω



3.3.5、 AC Characteristics 1

($T_{amb}=-40^{\circ}\text{C}$ to $+85^{\circ}\text{C}$, voltages are referenced to GND (ground=0V), unless otherwise specified)

Parameter	Symbol	Conditions	Min.	Typ. ^[1]	Max.	Unit	
propagation delay	t_{pd}	Z to Yn or Yn to Z; see Figure 12 ^{[2][3]}	$V_{CC}=1.65\text{V to }1.95\text{V}$	-	-	2	ns
			$V_{CC}=2.3\text{V to }2.7\text{V}$	-	-	1.2	ns
			$V_{CC}=2.7\text{V}$	-	-	1.0	ns
			$V_{CC}=3\text{V to }3.6\text{V}$	-	-	0.8	ns
			$V_{CC}=4.5\text{V to }5.5\text{V}$	-	-	0.6	ns
enable time	t_{en}	S to Yn; see Figure 13 ^[4]	$V_{CC}=1.65\text{V to }1.95\text{V}$	3.1	8.7	20.8	ns
			$V_{CC}=2.3\text{V to }2.7\text{V}$	2.2	5.3	11.5	ns
			$V_{CC}=2.7\text{V}$	2.1	4.9	9.3	ns
			$V_{CC}=3\text{V to }3.6\text{V}$	1.8	4.0	7.6	ns
			$V_{CC}=4.5\text{V to }5.5\text{V}$	1.5	3.0	5.7	ns
disable time	t_{dis}	S to Yn; see Figure 13 ^[5]	$V_{CC}=1.65\text{V to }1.95\text{V}$	3.0	6.0	11.4	ns
			$V_{CC}=2.3\text{V to }2.7\text{V}$	2.1	4.4	7.3	ns
			$V_{CC}=2.7\text{V}$	2.1	4.2	6.3	ns
			$V_{CC}=3\text{V to }3.6\text{V}$	1.7	3.6	5.3	ns
			$V_{CC}=4.5\text{V to }5.5\text{V}$	1.3	2.9	3.8	ns
break-befor emake time	t_{b-m}	see Figure 14 ^[6]	$V_{CC}=1.65\text{V to }1.95\text{V}$	0.5	-	-	ns
			$V_{CC}=2.3\text{V to }2.7\text{V}$	0.5	-	-	ns
			$V_{CC}=2.7\text{V}$	0.5	-	-	ns
			$V_{CC}=3\text{V to }3.6\text{V}$	0.5	-	-	ns
			$V_{CC}=4.5\text{V to }5.5\text{V}$	0.5	-	-	ns

Note:

[1] Typical values are measured at $T_{amb}=25^{\circ}\text{C}$ and nominal V_{CC} .

[2] t_{pd} is the same as t_{PLH} and t_{PHL} .

[3] Propagation delay is the calculated RC time constant of the typical ON resistance of the switch and the specified capacitance when driven by an ideal voltage source (zero output impedance).

[4] t_{en} is the same as t_{PZH} and t_{PZL} .

[5] t_{dis} is the same as t_{PLZ} and t_{PHZ} .

[6] Break-before-make specified by design.



3.3.6、AC Characteristics 2

($T_{amb}=-40^{\circ}\text{C}$ to $+125^{\circ}\text{C}$, voltages are referenced to GND (ground=0V), unless otherwise specified)

Parameter	Symbol	Conditions	Min.	Typ. ^[1]	Max.	Unit	
propagation delay	t_{pd}	Z to Yn or Yn to Z; see Figure 12 ^{[2][3]}	$V_{CC}=1.65\text{V to }1.95\text{V}$	-	-	3.0	ns
			$V_{CC}=2.3\text{V to }2.7\text{V}$	-	-	2.0	ns
			$V_{CC}=2.7\text{V}$	-	-	1.5	ns
			$V_{CC}=3\text{V to }3.6\text{V}$	-	-	1.5	ns
			$V_{CC}=4.5\text{V to }5.5\text{V}$	-	-	1.0	ns
enable time	t_{en}	S to Yn; see Figure 13 ^[4]	$V_{CC}=1.65\text{V to }1.95\text{V}$	3.1	-	22.0	ns
			$V_{CC}=2.3\text{V to }2.7\text{V}$	2.2	-	12.5	ns
			$V_{CC}=2.7\text{V}$	2.1	-	10.5	ns
			$V_{CC}=3\text{V to }3.6\text{V}$	1.8	-	9.0	ns
			$V_{CC}=4.5\text{V to }5.5\text{V}$	1.5	-	6.1	ns
disable time	t_{dis}	S to Yn; see Figure 13 ^[5]	$V_{CC}=1.65\text{V to }1.95\text{V}$	3.0	-	11.7	ns
			$V_{CC}=2.3\text{V to }2.7\text{V}$	2.1	-	7.6	ns
			$V_{CC}=2.7\text{V}$	2.1	-	6.6	ns
			$V_{CC}=3\text{V to }3.6\text{V}$	1.7	-	5.9	ns
			$V_{CC}=4.5\text{V to }5.5\text{V}$	1.3	-	4.3	ns
break-before emake time	t_{b-m}	see Figure 14 ^[6]	$V_{CC}=1.65\text{V to }1.95\text{V}$	0.5	-	-	ns
			$V_{CC}=2.3\text{V to }2.7\text{V}$	0.5	-	-	ns
			$V_{CC}=2.7\text{V}$	0.5	-	-	ns
			$V_{CC}=3\text{V to }3.6\text{V}$	0.5	-	-	ns
			$V_{CC}=4.5\text{V to }5.5\text{V}$	0.5	-	-	ns

Note:

[1] Typical values are measured at $T_{amb}=25^{\circ}\text{C}$ and nominal V_{CC} .

[2] t_{pd} is the same as t_{PLH} and t_{PHL} .

[3] Propagation delay is the calculated RC time constant of the typical ON resistance of the switch and the specified capacitance when driven by an ideal voltage source (zero output impedance).

[4] t_{en} is the same as t_{PZH} and t_{PZL} .

[5] t_{dis} is the same as t_{PLZ} and t_{PHZ} .

[6] Break-before-make specified by design.



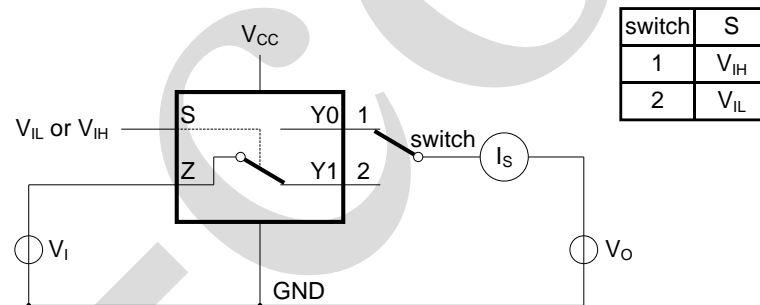
3.3.7. Additional AC Characteristics

($T_{amb}=25^{\circ}\text{C}$, voltages are referenced to GND (ground=0V), unless otherwise specified)

Parameter	Symbol	Conditions	Min.	Typ.	Max.	Unit	
total harmonic distortion	THD	$f_i=600\text{Hz to }20\text{kHz};$ $R_L=600\Omega;$ $C_L=50\text{pF}; V_I=0.5\text{V(p-p)};$ see Figure 16	$V_{CC}=1.65\text{V}$	-	0.260	-	%
			$V_{CC}=2.3\text{V}$	-	0.078	-	%
			$V_{CC}=3.0\text{V}$	-	0.078	-	%
			$V_{CC}=4.5\text{V}$	-	0.078	-	%
-3 dB frequency response	$f_{(-3\text{dB})}$	$R_L=50\Omega;$ see Figure 17	$V_{CC}=1.65\text{V}$	-	200	-	MHz
			$V_{CC}=2.3\text{V}$	-	300	-	MHz
			$V_{CC}=3.0\text{V}$	-	300	-	MHz
			$V_{CC}=4.5\text{V}$	-	300	-	MHz
isolation (OFF-state)	α_{iso}	$R_L=50\Omega; C_L=5\text{pF};$ $f_i=10\text{MHz};$ see Figure 18	$V_{CC}=1.65\text{V}$	-	-42	-	dB
			$V_{CC}=2.3\text{V}$	-	-42	-	dB
			$V_{CC}=3.0\text{V}$	-	-40	-	dB
			$V_{CC}=4.5\text{V}$	-	-40	-	dB
charge injection	Q_{inj}	$C_L=0.1\text{nF}; V_{gen}=0\text{V};$ $R_{gen}=0\Omega;$ $f_i=1\text{MHz}; R_L=1\text{M}\Omega;$ see Figure 19	$V_{CC}=1.8\text{V}$	-	3.3	-	pC
			$V_{CC}=2.5\text{V}$	-	4.1	-	pC
			$V_{CC}=3.3\text{V}$	-	5.0	-	pC
			$V_{CC}=4.5\text{V}$	-	6.4	-	pC
			$V_{CC}=5.5\text{V}$	-	7.5	-	pC

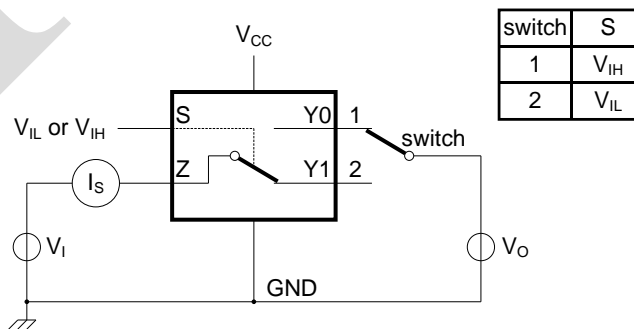
4. Testing Circuit

4.1. DC Testing Circuit



$V_I=V_{CC}$ or GND and $V_o=GND$ or V_{CC} .

Figure 3. Test circuit for measuring OFF-state leakage current

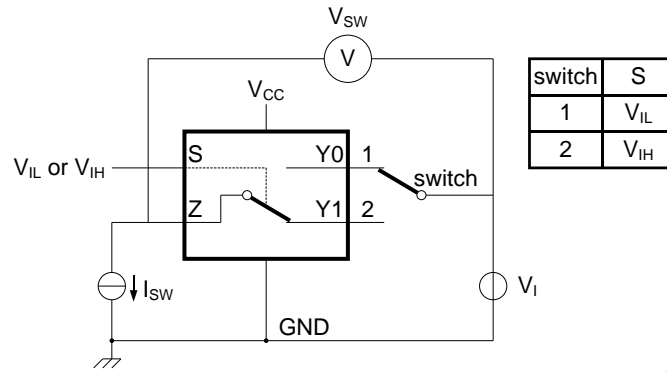


$V_I=V_{CC}$ or GND and $V_o=\text{open circuit}$.

Figure 4. Test circuit for measuring ON-state leakage current

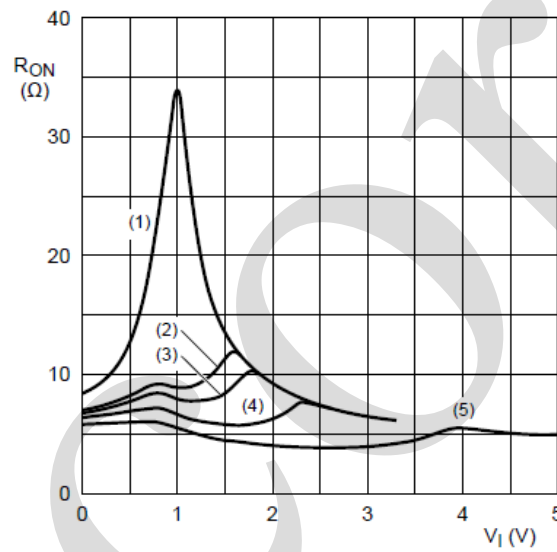


4.2、ON Resistance Test Circuit And Graphs



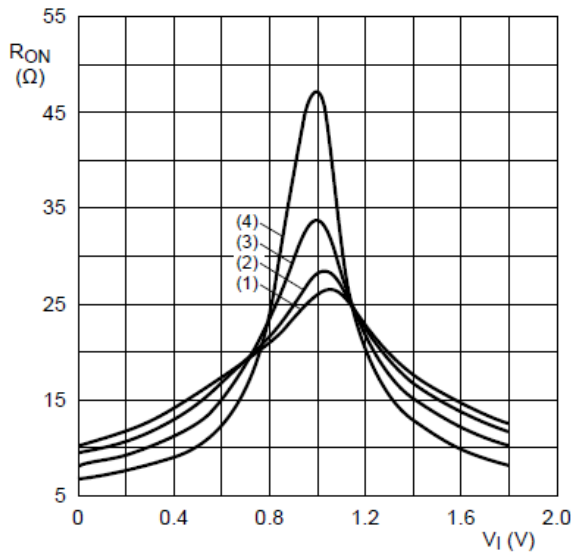
$$R_{ON} = V_{sw} / I_{sw}$$

Figure 5. Test circuit for measuring ON resistance



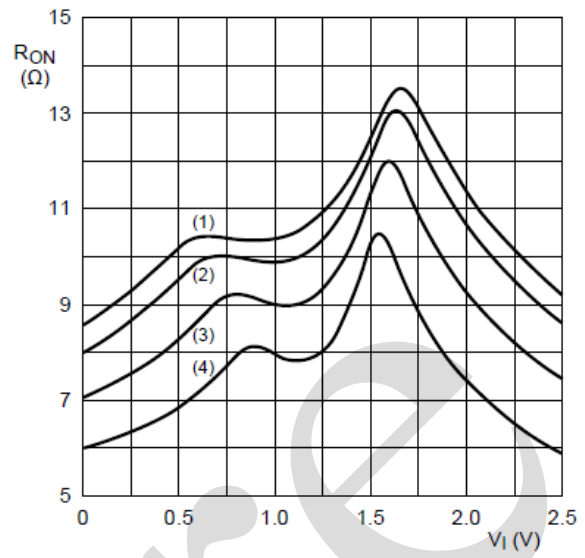
- (1) V_{CC}=1.8V.
- (2) V_{CC}=2.5V.
- (3) V_{CC}=2.7V.
- (4) V_{CC}=3.3V.
- (5) V_{CC}=5.0V.

Figure 6. Typical ON resistance as a function of input voltage; T_{amb}=25°C



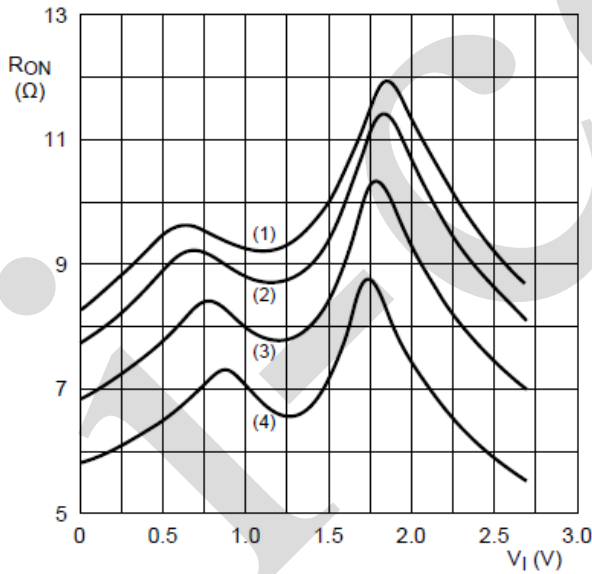
- (1) $T_{amb}=125^{\circ}\text{C}$.
- (2) $T_{amb}=85^{\circ}\text{C}$.
- (3) $T_{amb}=25^{\circ}\text{C}$.
- (4) $T_{amb}=-40^{\circ}\text{C}$.

Figure 7. ON resistance as a function of input voltage; $V_{CC}=1.8\text{V}$



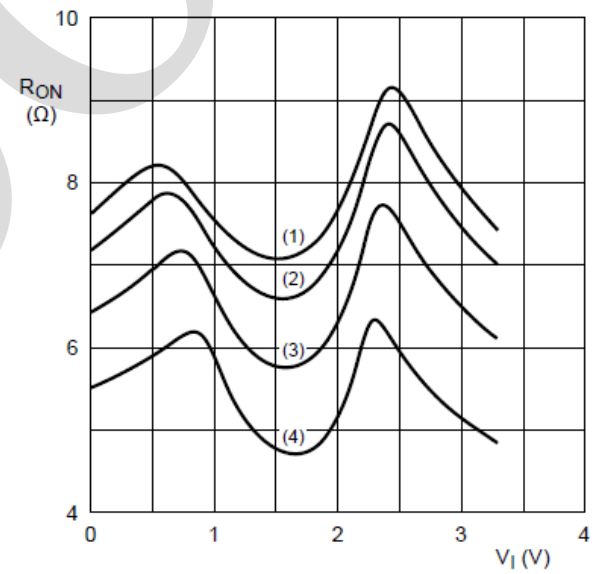
- (1) $T_{amb}=125^{\circ}\text{C}$.
- (2) $T_{amb}=85^{\circ}\text{C}$.
- (3) $T_{amb}=25^{\circ}\text{C}$.
- (4) $T_{amb}=-40^{\circ}\text{C}$.

Figure 8. ON resistance as a function of input voltage; $V_{CC}=2.5\text{V}$



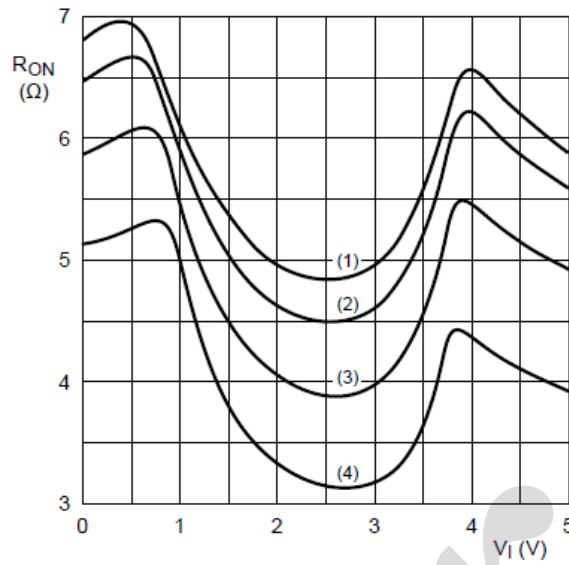
- (1) $T_{amb}=125^{\circ}\text{C}$.
- (2) $T_{amb}=85^{\circ}\text{C}$.
- (3) $T_{amb}=25^{\circ}\text{C}$.
- (4) $T_{amb}=-40^{\circ}\text{C}$.

Figure 9. ON resistance as a function of input voltage; $V_{CC}=2.7\text{V}$



- (1) $T_{amb}=125^{\circ}\text{C}$.
- (2) $T_{amb}=85^{\circ}\text{C}$.
- (3) $T_{amb}=25^{\circ}\text{C}$.
- (4) $T_{amb}=-40^{\circ}\text{C}$.

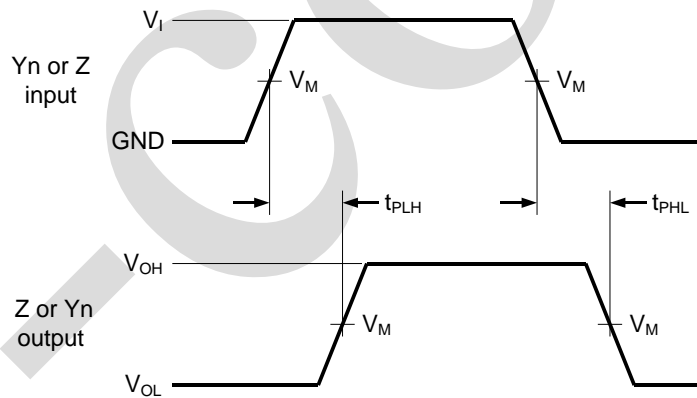
Figure 10. ON resistance as a function of input voltage; $V_{CC}=3.3\text{V}$



- (1) $T_{amb}=125^{\circ}\text{C}$.
- (2) $T_{amb}=85^{\circ}\text{C}$.
- (3) $T_{amb}=25^{\circ}\text{C}$.
- (4) $T_{amb}=-40^{\circ}\text{C}$.

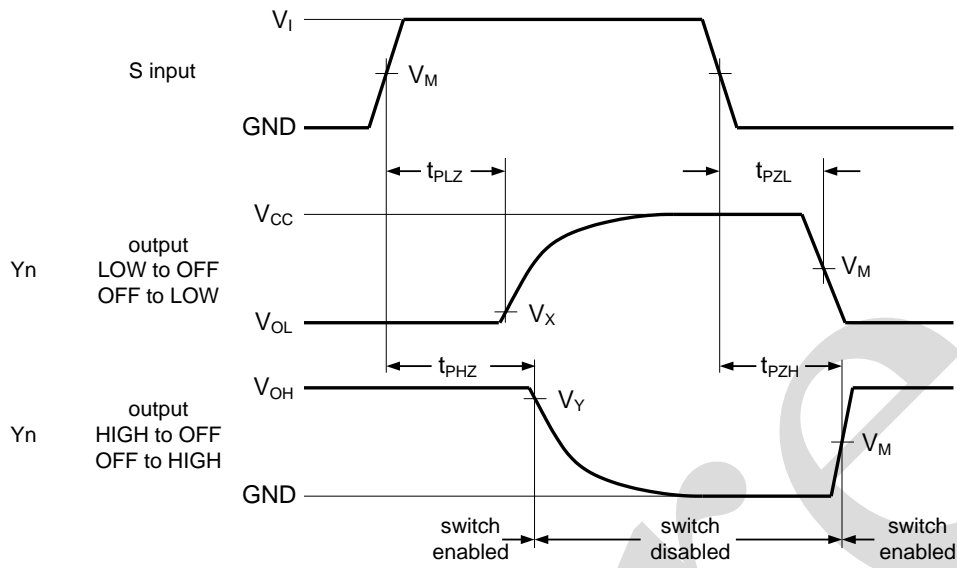
Figure 11. ON resistance as a function of input voltage; $V_{CC}=5.0\text{V}$

4.3. AC Testing Waveforms



Logic levels: V_{OL} and V_{OH} are typical output voltage levels that occur with the output load.

Figure 12. Input (Yn or Z) to output (Z or Yn) propagation delays



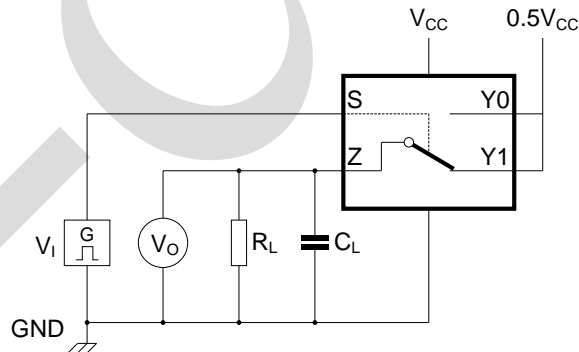
Logic levels: V_{OL} and V_{OH} are typical output voltage levels that occur with the output load.

Figure 13. Enable and disable times

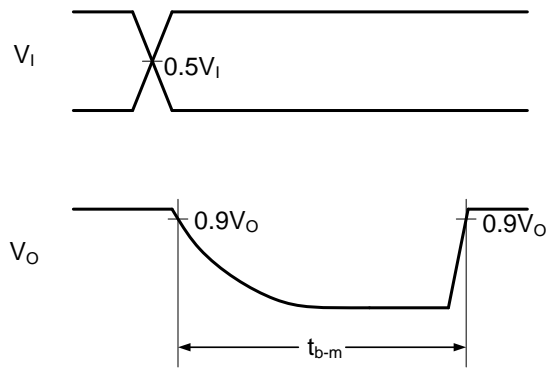
4.4. Measurement Points

Supply voltage	Input	Output		
V_{CC}	V_M	V_M	V_X	V_Y
1.65V to 5.5V	$0.5 \times V_{CC}$	$0.5 \times V_{CC}$	$V_{OL} + 0.3V$	$V_{OH} - 0.3V$

4.5. AC Testing Circuit

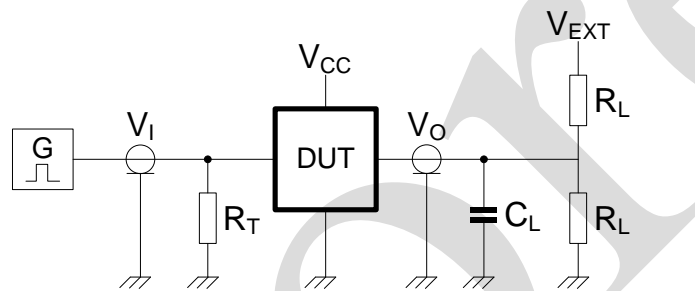


a. Test circuit



b. Input and output measurement points

Figure 14. Test circuit for measuring break-before-make timing



Definitions test circuit:

R_T =Termination resistance should be equal to output impedance Z_o of the pulse generator.

C_L =Load capacitance including jig and probe capacitance.

R_L =Load resistance.

V_{EXT} =External voltage for measuring switching times.

Figure 15. Test circuit for measuring switching times

4.6. Test Data

Supply voltage	Input		Load		V_{EXT}		
	V_I	t_r, t_f	C_L	R_L	t_{PLH}, t_{PHL}	t_{PZH}, t_{PHZ}	t_{PZL}, t_{PLZ}
1.65V to 1.95V	V_{CC}	$\leq 2.0ns$	50pF	500Ω	open	GND	$2 \times V_{CC}$
2.3V to 2.7V	V_{CC}	$\leq 2.0ns$	50pF	500Ω	open	GND	$2 \times V_{CC}$
2.7V	V_{CC}	$\leq 2.5ns$	50pF	500Ω	open	GND	$2 \times V_{CC}$
3V to 3.6V	V_{CC}	$\leq 2.5ns$	50pF	500Ω	open	GND	$2 \times V_{CC}$
4.5V to 5.5V	V_{CC}	$\leq 2.5ns$	50pF	500Ω	open	GND	$2 \times V_{CC}$



4.7. Additional AC Testing Circuit

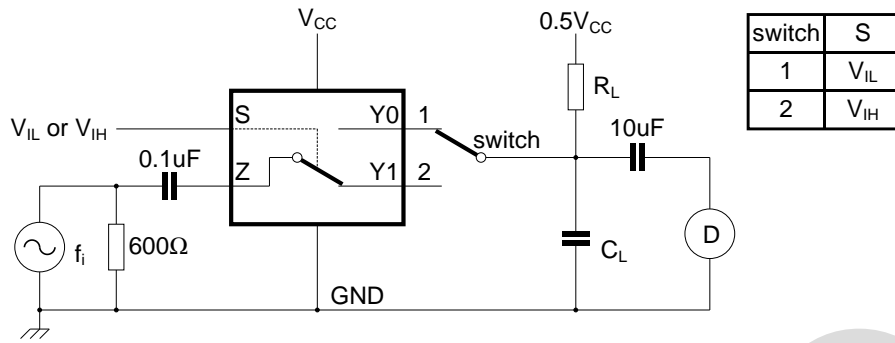
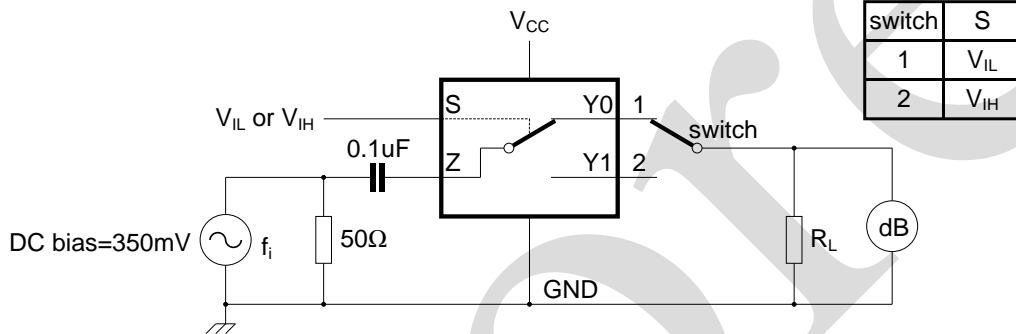
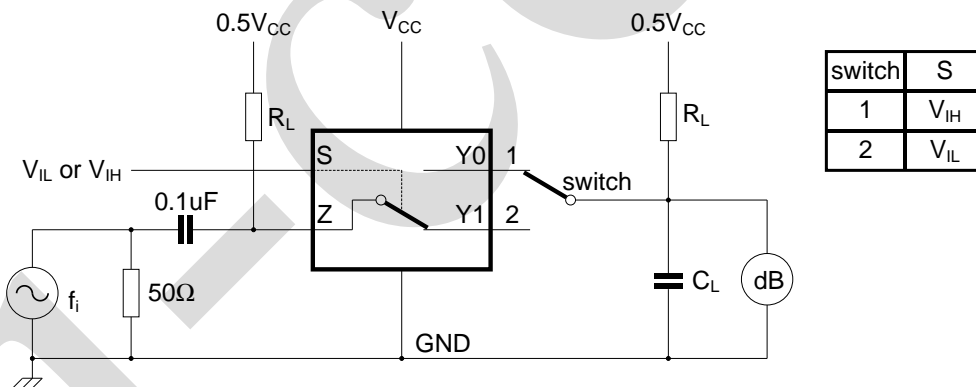


Figure 16. Test circuit for measuring total harmonic distortion



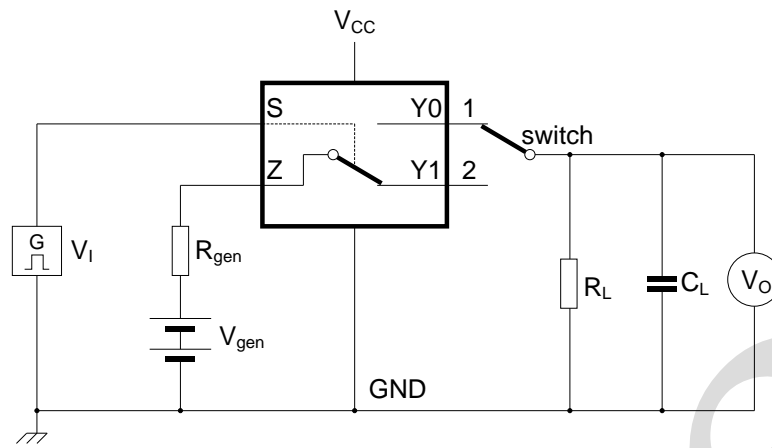
Adjust f_i voltage to obtain 0dBm level at output. Increase f_i frequency until dB meter reads -3dB.

Figure 17. Test circuit for measuring the frequency response when switch is in ON-state

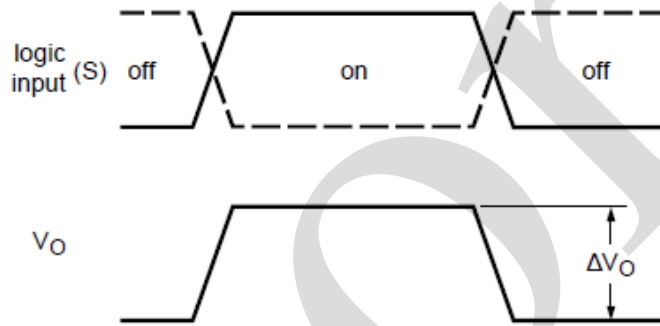


Adjust f_i voltage to obtain 0dBm level at input.

Figure 18. Test circuit for measuring isolation (OFF-state)



a. Test circuit



b. Input and output pulse definitions

$$Q_{inj} = \Delta V_O \times C_L.$$

ΔV_O = output voltage variation.

R_{gen} = generator resistance.

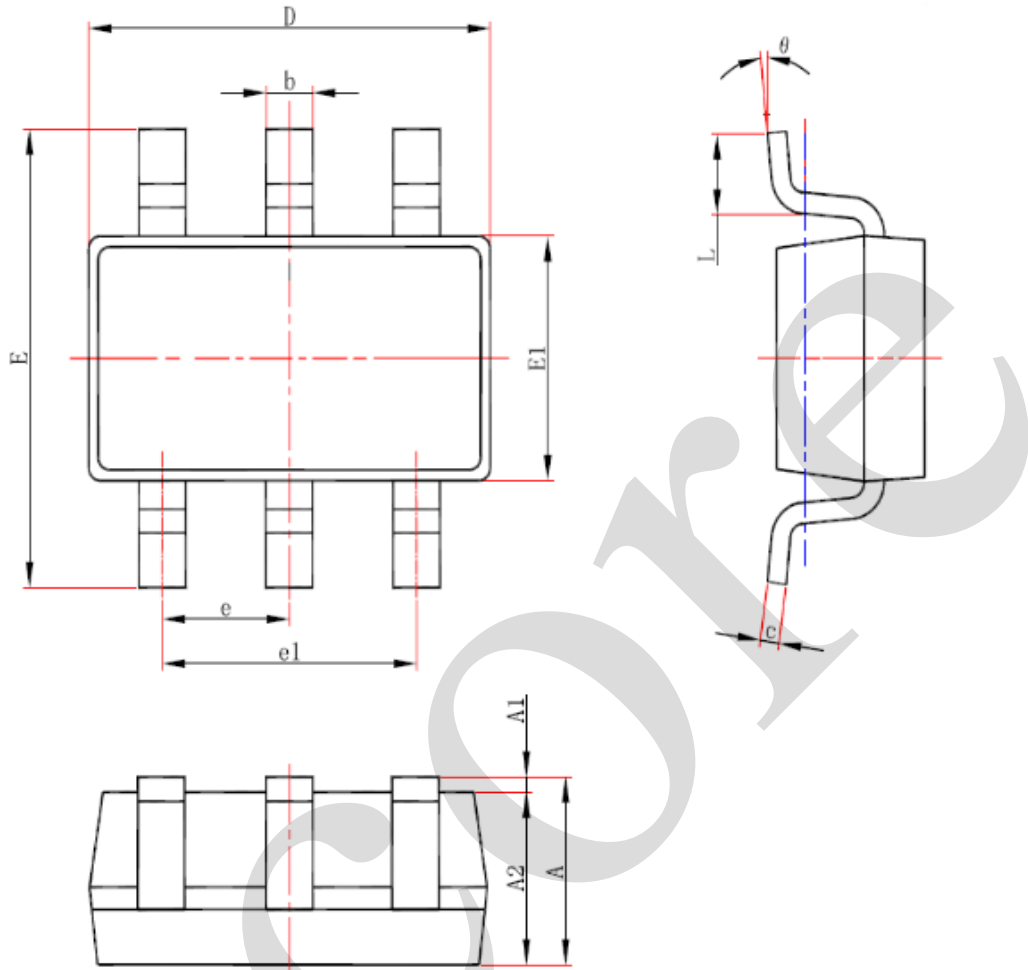
V_{gen} = generator voltage.

Figure 19. Test circuit for measuring charge injection



5、Package Information

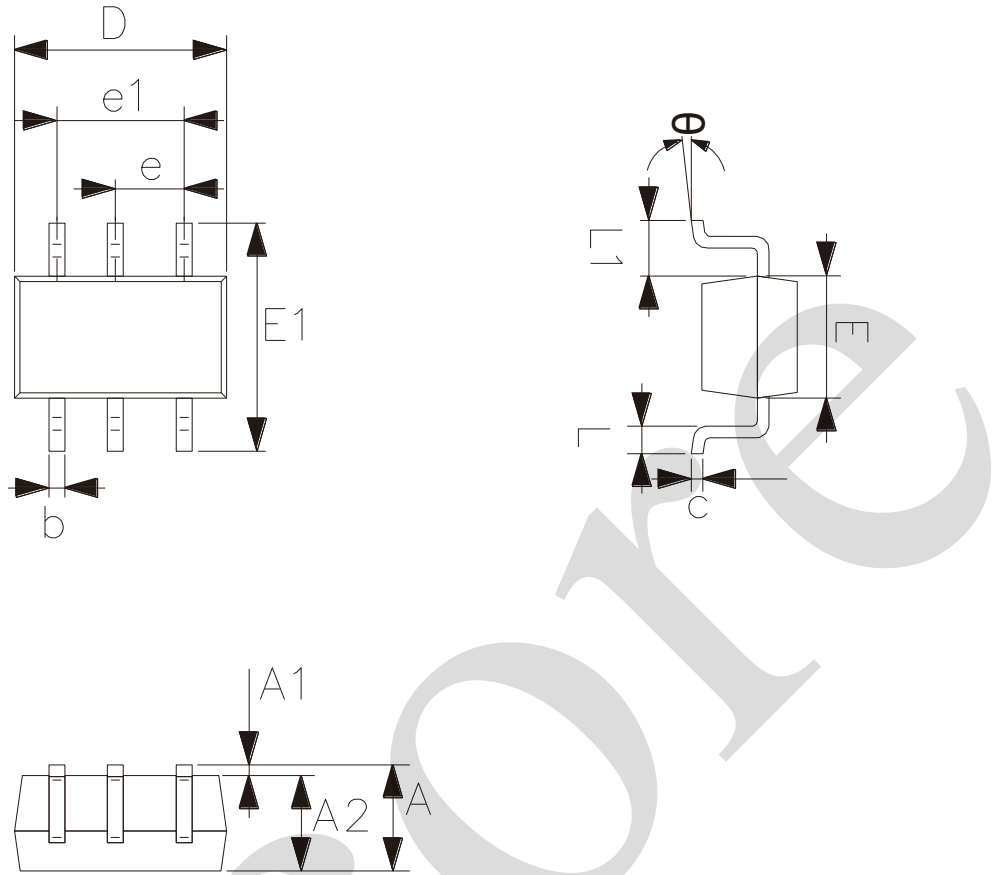
5.1、SOT-23-6



Symbol	Dimensions (mm)	
	Min.	Max.
A	-	1.25
A1	0.00	0.12
A2	1.00	1.20
b	0.30	0.50
c	0.10	0.20
D	2.82	3.02
E	2.60	3.00
E1	1.50	1.70
e	0.95	
e1	1.80	2.00
L	0.30	0.60
θ	0°	8°



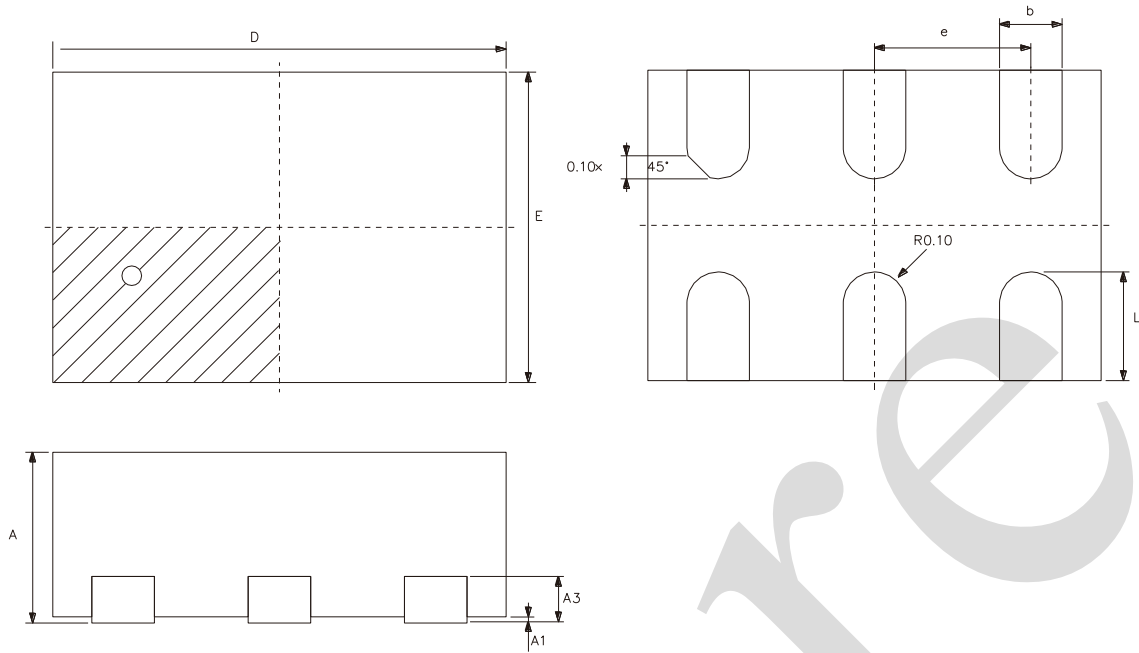
5.2、SOT-363



Symbol	Dimensions (mm)	
	Min.	Max.
A	0.90	1.10
A1	0.00	0.10
A2	0.90	1.00
b	0.15	0.35
c	0.11	0.175
D	2.00	2.20
E1	2.15	2.45
E	1.15	1.35
e	0.65	
e1	1.20	1.40
L	0.26	0.46
L1	0.525	
θ	0°	8°



5.3、XSON6



Symbol	Dimensions (mm)	
	Min.	Max.
A	0.51	0.60
A1	0.00	0.05
A3	0.15	
b	0.15	0.25
D	1.45	
E	1.00	
e	0.50	
L	0.25	0.45



6、 Statements And Notes

6.1、 The name and content of Hazardous substances or Elements in the product

Part name	Hazardous substances or Elements									
	Lead and lead compounds	Mercury and mercury compounds	Cadmium and cadmium compounds	Hexavalent chromium compounds	Polybrominated biphenyls	Polybrominated biphenyl ethers	Dibutyl phthalate	Butylbenzyl phthalate	Di-2-ethylhexyl phthalate	Diisobutyl phthalate
Lead frame	○	○	○	○	○	○	○	○	○	○
Plastic resin	○	○	○	○	○	○	○	○	○	○
Chip	○	○	○	○	○	○	○	○	○	○
The lead	○	○	○	○	○	○	○	○	○	○
Plastic sheet installed	○	○	○	○	○	○	○	○	○	○
explanation	○: Indicates that the content of hazardous substances or elements in the detection limit of the following the SJ/T11363-2006 standard. ×: Indicates that the content of hazardous substances or elements exceeding the SJ/T11363-2006 Standard limit requirements.									

6.2、 Notes

We Recommend you to read this chapter carefully before using this product.

The information in this chapter is provided for reference only and i-Core disclaims any express or implied warranties, including but not limited to applicability, special application or non-infringement of third party rights.

This product is not suitable for critical equipment such as life-saving, life-sustaining or safety equipment. It is also not suitable for applications that may result in personal injury, death, or serious property or environmental damage due to product malfunction or failure. I-Core will not be liable for any damages incurred by the customers at their own risk for such applications.

The customer is responsible for conducting all necessary tests i-Core's application to avoid failure in the application or the application of the customer's third party users. I-Core does not accept any liability.

The Company reserves the right to change or improve the information published in this chapter at any time. The information in this chapter are subject to change without notice. We recommend the customer to consult our sales staff before purchasing.

Please obtain related materials form i-Core's regular channels and we are not responsible for its content if it is provided by sources other than our company.

In case of any conflict between the Chinese and English version, the version is subject to the Chinese one.